



## **BOREHOLE-DEPLOYABLE LASER / HD VIDEO TOOL SURVEY SERVICES IN AIR- FILLED CAVITIES**

**Current cavity survey methods  
are often inadequate for today's  
challenging engineering projects  
that overly abandoned mines**

**Maximise pre-development  
confidence with our cost-  
effective, accurate, surface-  
controlled, state-of-the-art, true  
3D laser / HD video cavity survey  
services for:**

- **dimensions**
- **physical conditions**
- **grout volumes**

**Precise, calibrated depth  
measurements**

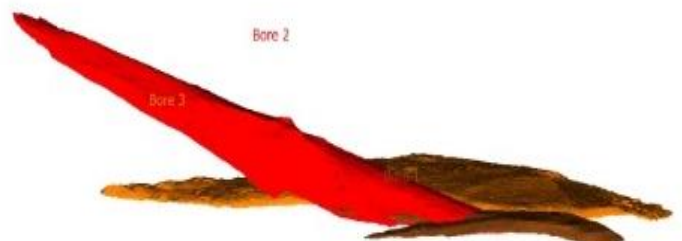
**Mine-spec safety compliance**

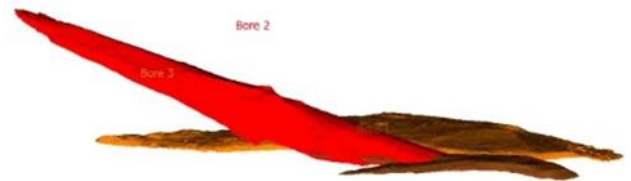
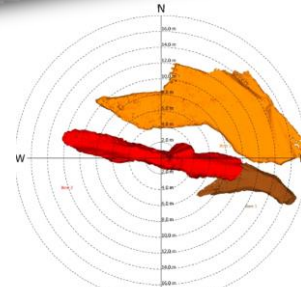
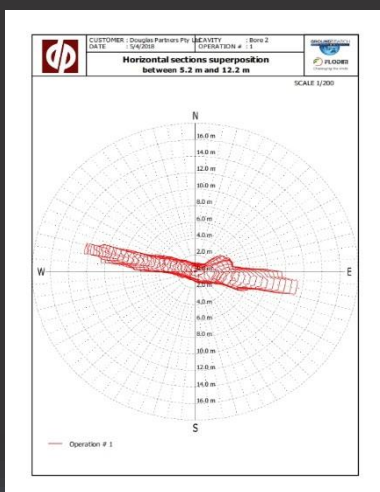
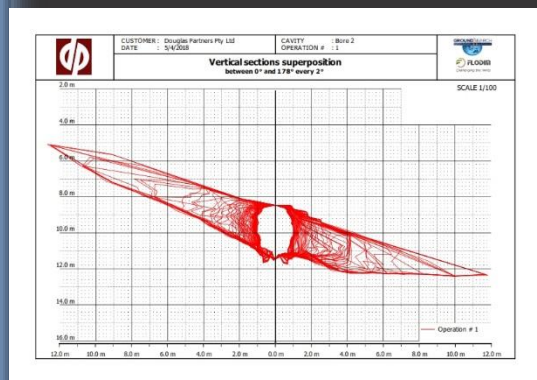
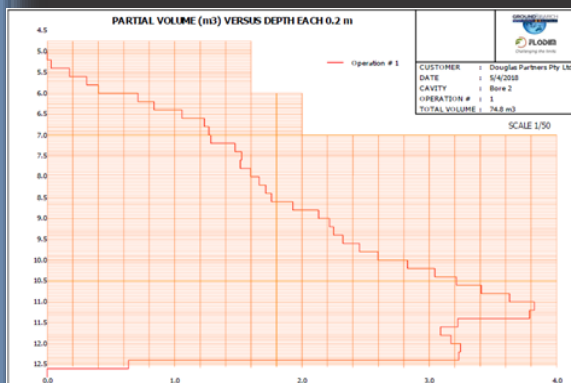
**Deployment via drill rigs and stand-  
alone, truck-mounted and portable  
survey units**



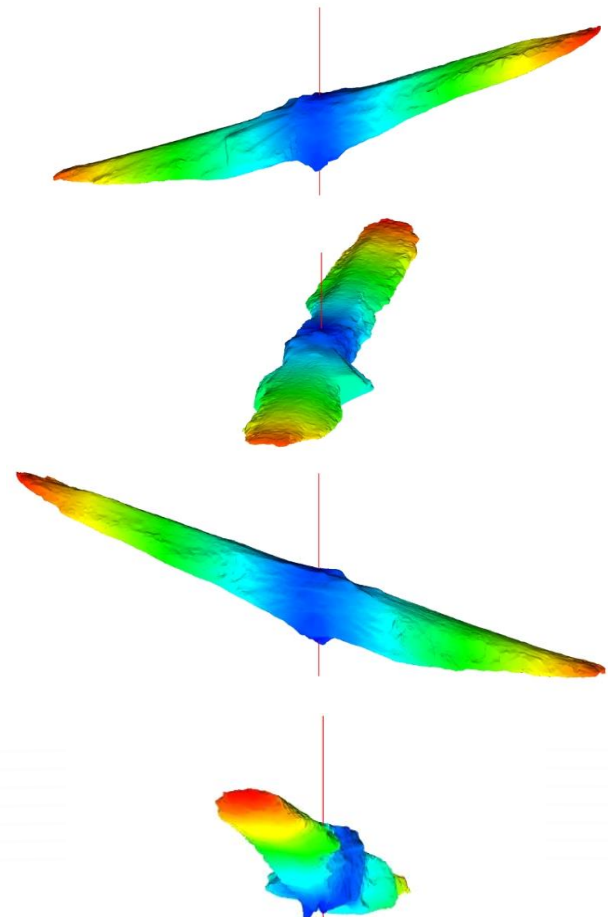
### **Some features include:**

- Deployed into cavities through H-size (96 mm) open and cased boreholes
- Operated from standard Groundsearch logging units
- No need for whole of tool to survey outside casing
- Variable sample intervals
- Proven technology in various cavity types
- Accurate quantitative and qualitative data in every direction
- Magnetic compass orientation
- Real time data validation
- 2D and 3D representations of cavity
- HD video and stills whilst surveying
- Multiple surveys combine into single model





*Below: N, E, S & W perspectives of solid models for a Lithgow NSW Australia Lithgow Seam laser cavity survey*



**Office/workshop address:**  
Groundsearch Australia Pty. Limited  
178 Racecourse Road  
Rutherford NSW 2320  
AUSTRALIA

**Phone + 61 2 4932 3582**

**M + 61 (0) 427 494 234**  
**E [admin@groundsearch.com.au](mailto:admin@groundsearch.com.au)**

**[www.groundsearch.com.au](http://www.groundsearch.com.au)**

